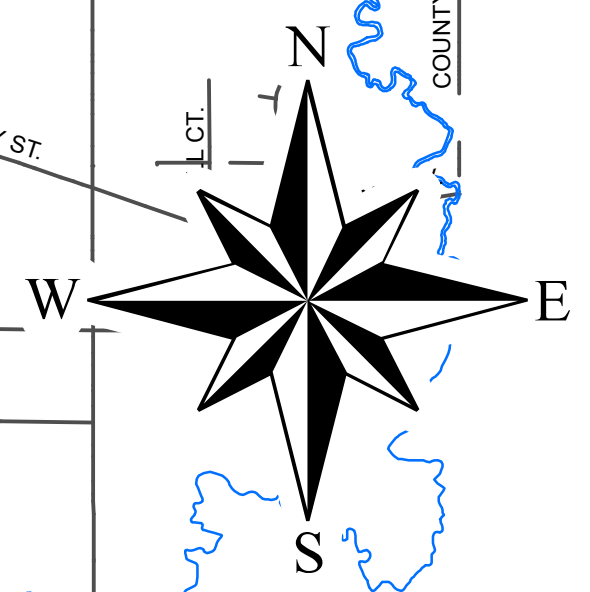


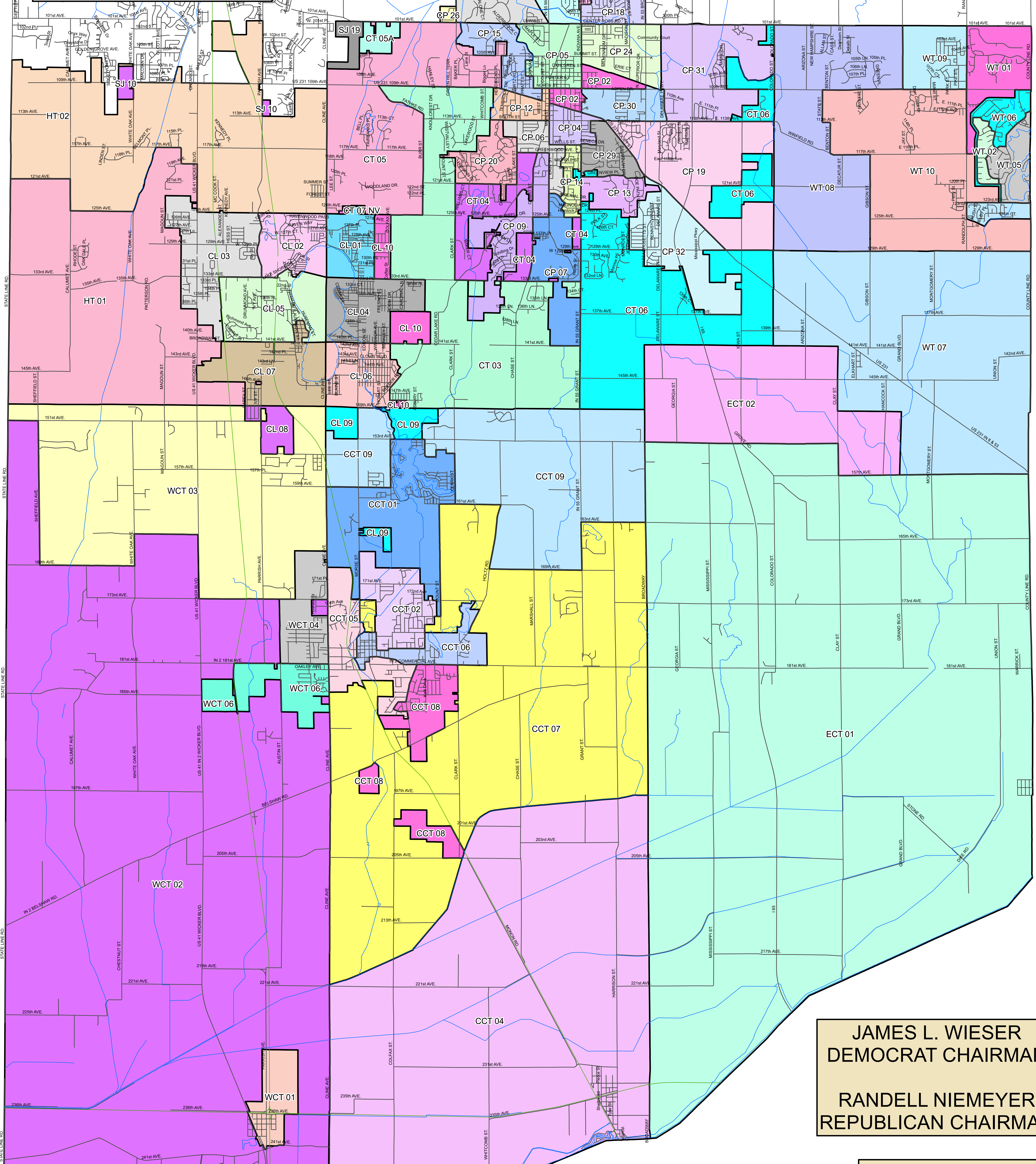
6TH SENATE DISTRICT



Road Centerlines

Railroads

Water lines



JAMES L. WIESER
DEMOCRAT CHAIRMAN

RANDELL NIEMEYER
REPUBLICAN CHAIRMAN

PREPARED BY
LAKE COUNTY BOARD OF
ELECTIONS & REGISTRATION
FOR REFERENCE ONLY